



Acalypha wilkesiana

COPPERLEAF

A fast growing shrub with oval, colorful leaves.

Color: Orange to burgundy variegated leaves



Caladium

ELEPHANT EAR

Heart shaped leaves on compact plants.

Color: Pink, white, green and red, often variegated leaves

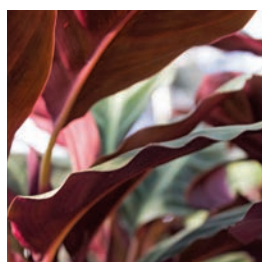


Aglaonema

CHINESE EVERGREEN

Large variegated leaves, bush form. Most commonly used as an interior plant.

Color: Green, silver, or white variegated leaves



Calathea

PRAYER PLANT/ RATTLESNAKE PLANT

Boldly marked upright oblong leaves with a wide variety of coloration and pattern.

Color: Green, dark green, cream and red leaves



Alocasia

ELEPHANT EAR

Large heart shaped or arrowhead shaped leaves, sometimes with variegation. Giant and dwarf varieties available.

Color: Bright green to dark green leaves



Chlorophytum comosum

SPIDER PLANT

Linear leafed plant with a graceful form. Plantlets are formed at the base of the cascading flower stems.

Color: Green or white and green variegated leaves



Alpinia

GINGER/ SHELL GINGER

Lance shaped, variegated or bright green leaves on a bushy upright plant. Used mainly as a foliage plant both for interiors and the landscape.

Color: Yellow-green variegated or bright green leaves, pink bloom

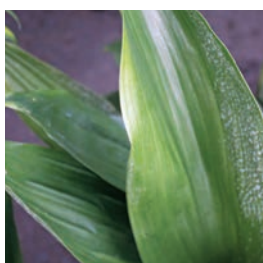


Citrus

Large glossy leaved shrubs or small trees producing sweet or tart fruits. Fragrant blooms.

latifolia 'Bearss' Lime
reticulata Clementine
sinensis 'Washington' Orange
sinensis 'Valencia' Orange
limon 'Meyer' Lemon
Fortunella 'Nagami' Kumquat

Color: Green leaves, White to blush bloom

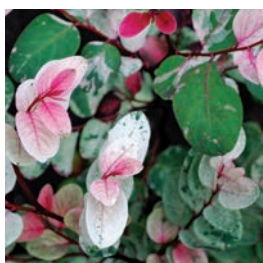


Aspidistra elatior

CAST IRON PLANT

Arching, lanceolate, glossy dark green leaves. An easy care interior plant.

Color: Dark green leaves

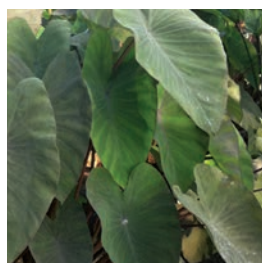


Breynia

SNOW BUSH

A profusion of round mottled leaves form a compact bush.

Color: Green, pink and white to white mottled leaves



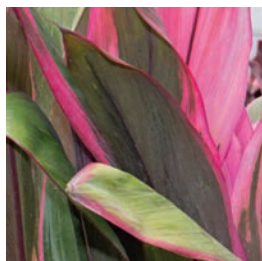
Colocasia

TARO

Heart-shaped, downward arching leaves on tall stems.

Color: Green or black leaves





Cordyline

Thin straplike or wide leaf varieties, in a range of brilliant red, green, or multi-hued tones.

Color: Red, green, orange, purple, and striped leaves



Codiaeum variegatum

CROTON

Vibrant coloration and patterns, on bushy plants with a variety of leaf forms.

Color: Red, green, gold, orange, yellow and rose leaves



Dracaena

Strap shaped leaves can be straight green or colorfully striped. Different species are grown as a small bush or more upright tree.

Color: Green, gold, lime, red or variegated leaves



Dracaena d. 'Janet Craig'
Dracaena d. Warneckii
Dracaena f. 'Massangeana'
Dracaena marginata
Dracaena reflexa



Ensete maurelii

RED LEAF BANANA

Large broad leaves range from deep burgundy to greenish-red. In New England quickly grows to six feet in one season.

Color: Green, red, burgundy leaves



Eugenia

BRUSH CHERRY

Small glossy leaves cover this upright plant which is traditionally sheared and grown in topiary form. Resembles boxwood and produces a bottle-brush style flower.

Color: Green leaves, white bloom



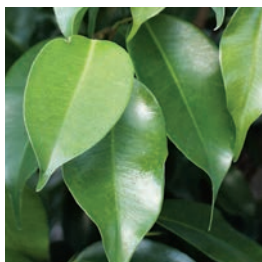
Ferns

'Tropical Ferns' encompasses an immense group of genus, species and cultivars. Listed are just a few that are excellent interior plants, that perform equally in the landscape or containers and in a variety of conditions.

Color: Green, white, or lime leaves



Asparagus - Foxtail, Plumosa, Sprengeri
Adiantum - Maidenhair
Asplenium - Bird's Nest
Cyathea - Tree Fern
Nephrolepis - Boston, Kimberly
Platynerium - Staghorn
Pteris - Brake



Ficus

FIG

A large genus which ranges from tall upright trees, to vines and shrubs.

Color: Green or red leaves



benjamina - Weeping Fig
carica - Common Fruit Bearing Fig
elastica - Rubber Plant
lyrata - Fiddle Leaf Fig
pumila - Creeping Fig



Hedera

IVY

A tropical variety vine for climbing, creeping, or hanging.

Color: Green, variegated gold or variegated white leaves



Homalocladium platycladum

RIBBON BUSH/ TAPEWORM PLANT

Segmented, smooth stems on a multi-branched upright leafless plant.

Color: Green leaves



Manihot esculenta

TAPIOCA

'Variegata'

Deeply lobed green leaves with creamy yellow centers, on bright red stems.

Color: Cream, yellow and green variegated leaves

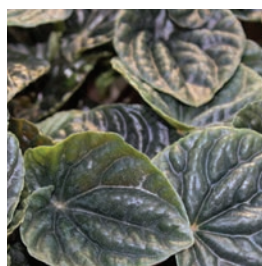




Musa
BANANA

A genus containing many species of bananas and plantains including tall, dwarf and even cold hardy varieties.

Color: Green, red or variegated leaves



Peperomia caperata

Low growing mounding plant with fleshy oval or heart shaped leaves. May be rippled or smooth.

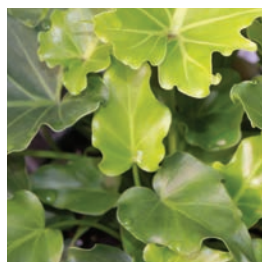
Color: Green, red, grey, marbled or variegated leaves



Olea europaea
OLIVE TREE

A small tree native to the Mediterranean, with small oval leaves.

Color: Silver-gray leaves



Philodendron

Vine and bush varieties in a range of colors, shapes and variegation.

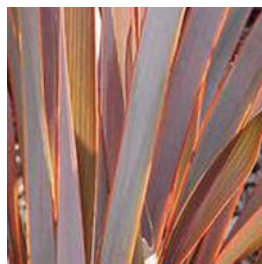
Color: Green, red, lime, or variegated leaves



Palm

Popular in warmer climates, palms make great landscape accents in the New England garden. Many species also thrive indoors. Available in a vast array of genus, species and cultivars providing many forms and sizes.

Color: Green, silver or blue fronds

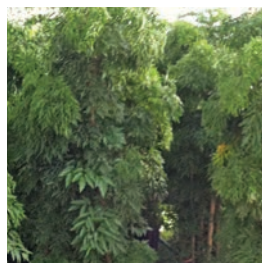


Phormium

NEW ZEALAND FLAX

Upright plant with spiky sword-like foliage in a variety of dramatic color combinations.

Color: Green, red, lime, orange, olive, pink, yellow striped or solid leaves



Polyscias

ARALIA

Cultivars have either ovate variegated and green leaves or finely segmented compound leaves with toothed margins.

Color: Green, green-white, lime, dark chocolate leaves

fruticosa - Ming Aralia
pinnata - Balfour Aralia
scutellaria - Fabian Aralia



Pothos

A popular easy care vine with heart shaped leaves. Primarily in interior settings.

Color: Green, silver or lime often variegated leaves



Sanchezia nobilis

ZEBRA PLANT

Bushy plant with yellow veins on green leaves can produce orangey flowers. Used primarily as a foliage plant in New England.

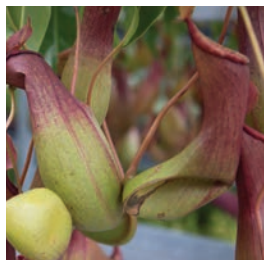
Color: Yellow and green leaves





Sanseveria
SNAKE PLANT/ MOTHER IN LAWS TONGUE
Broad upright sword-like leaves.
Carefree as interior plant.

Color: Dark green, yellow or cream
variegated leaves
☀️ ⬤



Sarracenia purpurea
PURPLE PITCHER PLANT
Carnivorous plant producing large
low-hanging 'pitchers' to catch prey.

Color: Dark green leaves, purple pitchers
☀️ ⬤



Schefflera
UMBRELLA TREE/ FALSE ARALIA
Large variation in leaf form dependant
on species. Shiny oval leaves, to slender
narrow, jagged toothed leaves.

Color: Green, dark purple green,
or creamy white variegated leaves
☀️ ☀️ ⬤

actinophylla
arboricola
elegantissima



Selaginella
SPIKEMOSS
Producing spores like ferns often means
this plant is misidentified. Moss like
carpet or a mound of fan like foliage.

Color: Green, gold, red,
or variegated leaves
⬤



Setcreasea
PURPLE HEART PLANT/WANDERING JEW
Fast growing groundcover or hanging plant.

Color: Burgundy leaves
☀️ ⬤



Spathiphyllum
PEACE LILY
Bushy plant with large, glossy, pointed
oval leaves. Produces multiple showy
hood-shaped inflorescences.

Color: Dark green leaves, white bracts
☀️ ⬤



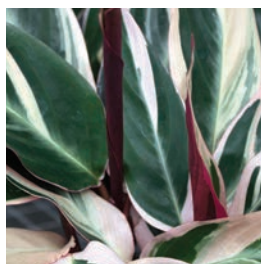
Strelitzia
BIRD OF PARADISE
Large upright plant with broad oval
leaves. The inflorescence emerges from
a horizontal beak-like bract and resembles
a bird's plumed head.

Color: Orange and blue or white and blue
☀️ ☀️



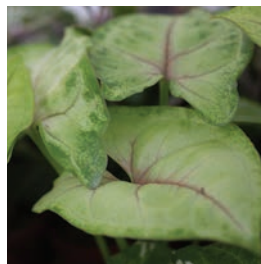
Strobilanthes dyerianus
'Persian Shield'
Oval pointed metallic leaves bear
deep dark green veins.

Color: Purple leaves with green
veins and margins
☀️ ⬤



Stromanthea sanguinea
Foliage plant valued for its
interesting coloration.

Color: Cream, green and red leaves
☀️ ⬤



Syngonium
ARROWHEAD VINE
Oval heart to arrow shaped leaves.

Color: Green, silver, white or pink leaves
☀️ ☀️ ⬤



Zamioculcas zamifolia
ZZ PLANT
Glossy pinnate leaves on upright stems.
Prized for being an easy care interior plant.

Color: Green leaves
☀️ ⬤